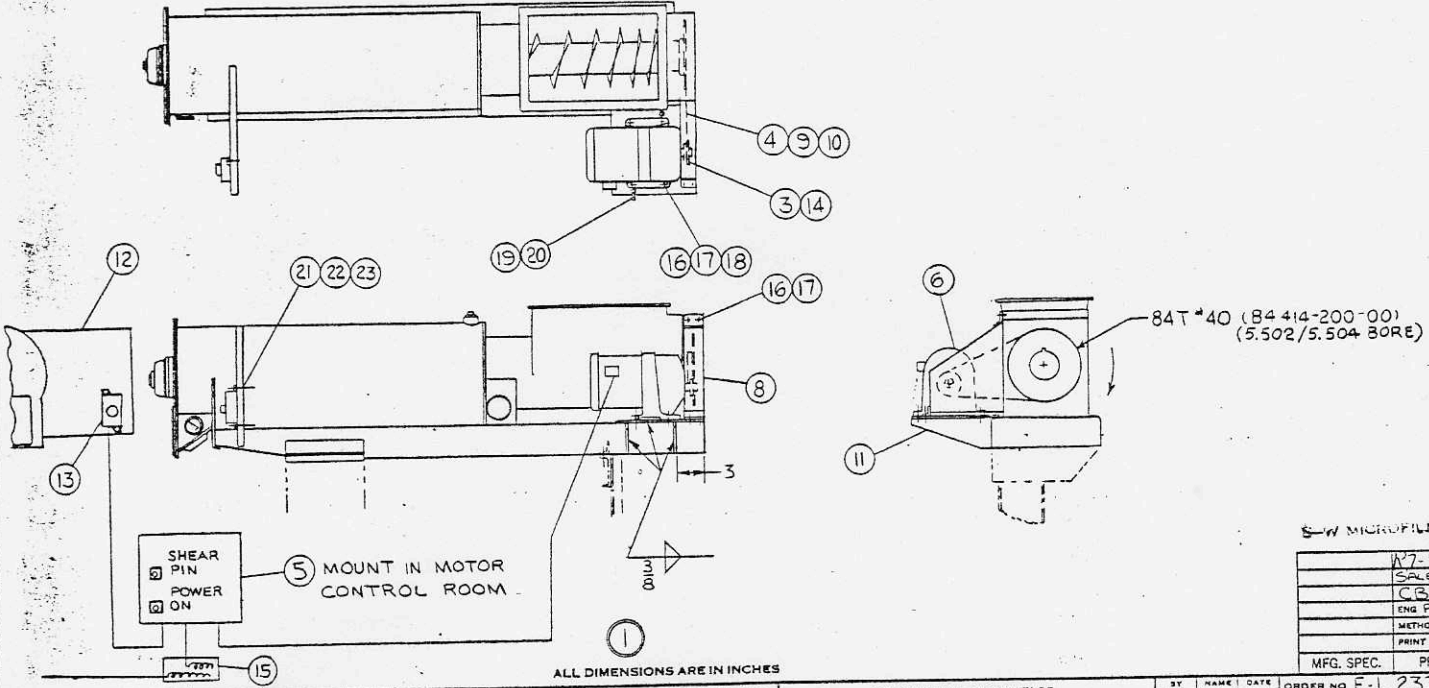


B3700-092



SW MICROFILM C

W7-771
SALES PCL
CBOM II
ENGR PCL II
METHODS
PRINT CRIB
MFG. SPEC.
PRINTS

UNLESS OTHERWISE NOTED FRACTION = DECIMAL = MACHINED FILLET RADIUS 1/32 IN 1/32 ROUGHNESS HEIGHT ON ALL MACHINED SURFACES SHALL NOT EXCEED MICRO-INCHES	CONFIDENTIAL - PROPERTY OF SPROUT, WALDRON & CO. INC. MUNCY, PA.	BY NAME DATE OR EKD 8-30-79	ORDER NO E-L 2336
C SEE SH1 FOR REV.	DRIVE, FEED SCREW, PARA- JUST, 18 X 56 DUAL DRIVE FEEDER CONDITIONER	CHECK G.P. 9/27/79 APPROV KDM 9/28/79 SCALE: NTS	SHEET 2 OF 2 DRAWING NUMBER B3700-092

260-092		QUANTITIES ARE FOR ONE UNIT		PC NO	DESCRIPTION	PATT NO	MATL SPEC	DWG. PT OR PC NO
C	1	15	TRANSFORMER, ISOLATION, 5 KVA RATING, 60 HZ., 1 PH., 230 OR 460 V INPUT, 60 HZ, 1 PH, 230 V OUTPUT, NEMA 1 ENCLOSURE, ENGINEERED DRIVES PT. NO. 0X90010 OR EQUAL					WA53852
	8	16	SCREW, CAP, HEX HD., 3/8 X 1-1/2	STL	WA45777			
	8	17	WASHER, LOCK, SPLIT, 3/8	STL	WA01363			
	4	18	NUT, HEX, FINISHED, 3/8-NC	STL	WA24944			
	2	19	SCREW, SET, HEX SOC. HD., 1/2-NC X 2" LG., CUP PT.	STL	WA07745			
	2	20	NUT, SQUARE, HEAVY, 1/2 NC	STL	WA40401			
	2	21	SCREW, CAP, HEX HEAD, 1/4-NC X 1" LG.	GR-5 STL	WA45630			
	2	22	WASHER, LOCK, SPLIT, 1/4	STL	WA01371			
	2	23	NUT, HEX, FINISHED, 1/4-NC	STL	WA24942			
	A	3	BUSHING, QD, SH, 7/8 BORE, 3/16 X 3/32 KNY.					WA29674
		4	CHAIN, SGL, RC, NO. 40, 1/2 P, 65" LG.					
	C	5	CONTROL, MOTOR SPEED, PARAJUST A, 2 HP, NO. 602020 NEMA 12 ENCLOSURE, W/ EXTENDED SPEED RANGE TO 90 HERTZ, W/ MINI-MAX SPEED TRIM POTENTIOMETERS KIT NO. 680033					WA53851
		6	GEARMOTOR, PARALLEL SHAFT, 1-1/2 HP, 350 RPM, 3 PH, 60 HZ, 230/460 VOLT, EXPLOSION-PROOF CLASS 11 GROUPS F & G, U.S. MOTORS FRAME 145T-5, TYPE LF-GR, MOUNTING POSITION F-1, STD. CONDUIT BOX LOCATION					WA48009
		8	GUARD, DRIVE					B799-204-00
		9	LINK, CONN, SGL, RC, 1/2 P NO. 40				STL	WA08346
		10	LINK, OFFSET, SGL, RC, 1/2 P NO. 40				STL	WA08348
		11	PLATE, MOTOR MTG					C3321-211-00
	U	12	DRILLING, SPEED CONTROL MTG. PLATE					A2093-011/1
		13	POTENTIOMETER ASS'Y					B4414-300-00
		14	SPROCKET, QD, SGL RC, 1/2 P, 20T, NO. 40, SH HUB					WA47999

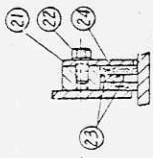
SW MICROFILM C

W7-771
SALES PCL
CBOM II
ENGR PCL II
METHODS
PRINT CRIB
MFG. SPEC.
PRINTS

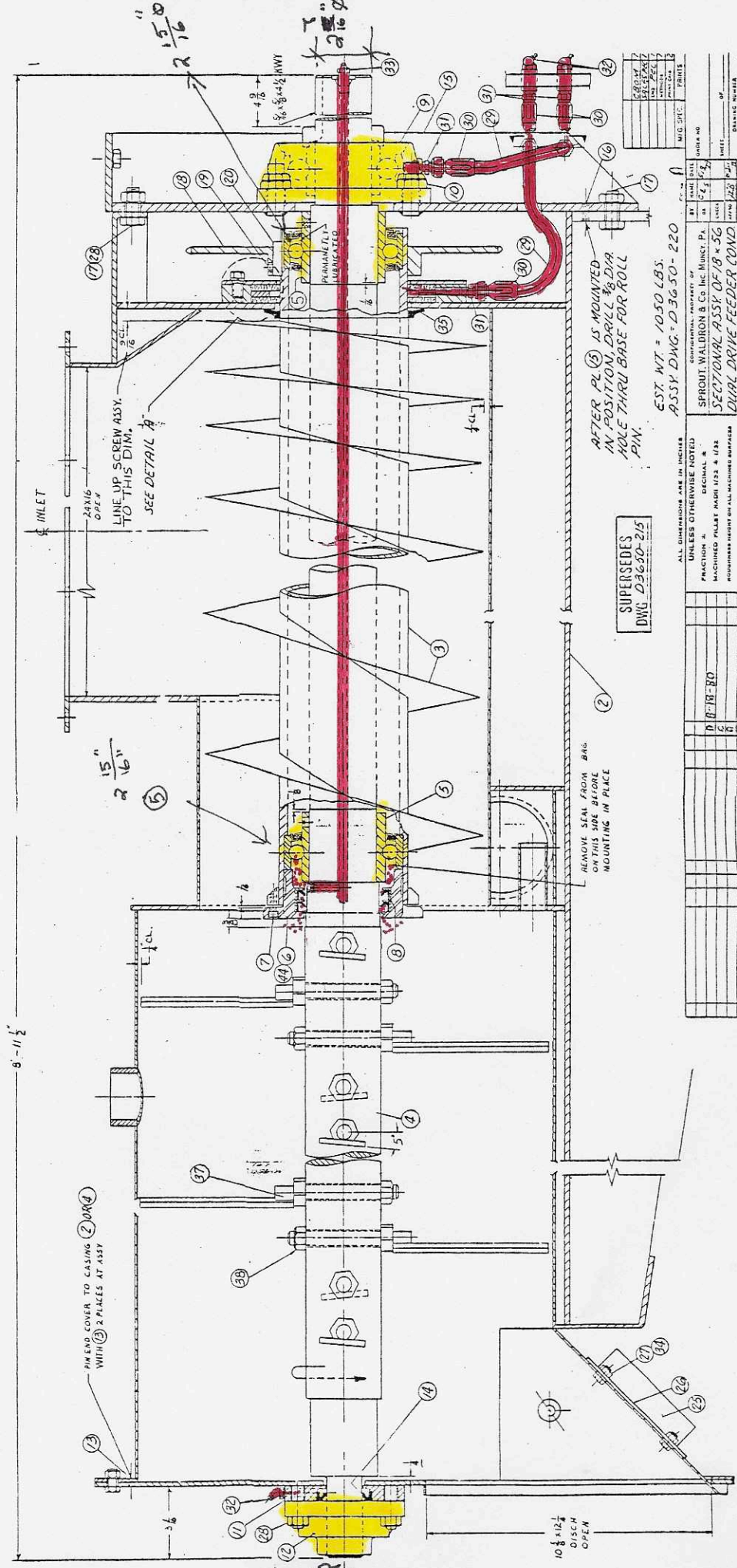
C WA53851 WAS 48014 RE 15, 5 KVA WAS 3		TOLERANCES UNLESS OTHERWISE NOTED DECIMAL FRACTION ANGLES XX - - - XXX - - -		BY NAME DATE OR EKD 8-30-79	SCALE NONE	ORDER NO.
C Add 2HP 602020 WAS 601320 P. 5		MACHINED FILLET RADIUS 1/32 +1/32 MAX MACHINED SURFACE ROUGHNESS MICROINCHES (AA1)		CHECK G.P. 9/27/79 APPROV KDM 9/28/79	SHEET 1 OF 2	DRAWING NUMBER B3700-092

QTY	PC NO	DESCRIPTION	MATL SPEC	DWG. PT OR PC NO
X		SECT. ASSY., 18 X 56 D.D. FEEDER COND. (304 SST)		
1	2	CASING, FEEDER-COND. ASSY.		D573-204-00
1	3	SCREW FEEDER		B575-100-00
1	4	SHAFT, AGITATOR		C2469-105-00
2	5	BRG., WIDE INNER RING, BALL, 2-15/16 DIA., SEALMASTER ER47		WA10383
1	6	COVER, RBG		B3600-200/1
2	7	SCREW, CAP, HEX, SOC. HD., 1/4 NC X 3/4 18-8 SST		WA45277
2	8	SEAL, OIL, RADIAL, GARLOCK NO. 53X2225, 1/2W X 3-1/8 DIA. X 4, 12		WA43937
1	9	BEARING, FLANGE, BLOCK, BALL, 2-7/16 DIA., FAFNIR LCJO		WA44480
4	10	NUT, LOCK, FULL HGT, HEAVY HEX, 3/4 NC FLEXLOCK 18-8SST		WA50156
1	11	RETAINER, SEAL		A831-006/1
	12	BRG, FLANGED BLOCK, BALL, 1-1/2 DIA, SEALMASTER SE24		WA12349
2	13	PIN, SLOTTED, SPRING, 1/4 X 1/2 LG. 18-8 SST		WA27605
1	14	SEAL, OIL, RADIAL, GARLOCK NO. 63X646, 3/8W X 1.5" ID X 2.375 OD		WA43939
1	15	PL., BRG, SUPPORT		B3563-100-00
2	16	PIN, SLOTTED SPRING, 3/8 X 3/4 LG.	STL	WA46947
6	17	SCREW, CAP, HEX HD, 1/2 NC, 1-1/4 GR-5	STL	WA43494
1	18	SPROCKET, SINGLE ROLLER CHAIN, 84T, 1/2P, NO 40		B4414-200-00
2	19	SCREW, SET, HEX SOC. HD., 3/8 NC X 5/8, CUP PT.	STL	WA04313
1	20	KEY 3/8 X 3/8 X 1-1/2 LG. C1018	CFS	
1	21	RING, SPLIT		B3601-201/1
4	22	SCREW, CAP, HEX HD, 3/8 NC X 3/4 GR-5	STL	WA44554
2	23	RING, SEAL		B3601-202/1
1	24	RING, SPACER		B3601-203/1
1	25	MAGNET, HEAVY DUTY, EREIZ, FIG. 4-MODEL C, 12"		WA47620
2	26	CLIP, MAGNET SUPPORT		A 1786-000-00
4	27	SCREW, CAP, HEX HD, 1/4 NC X 1/2 18-8 SST		WA09326
10	28	NUT, LOCK, FULL HGT, HEAVY HEX, 1/2NC FLEXLOCK 18-8 SST		WA28517
2	29	HOSE, AEROCUIP NO. 1503-4 X 24 LG.		
4	30	FITTING, HOSE, SWVL, 1/4 HOSE X 7/16 JIC, AERO NO. 411-4S		WA43488
4	31	FITTING, TUBE, ADAPTOR, JIC, MALE PIPE, AERO NO. 2021-2-4S		WA39648
3	32	FITTING, GREASE, 45 DEG, THRD, 1/8 STL, ALEMITE NO. 1688		WA12648
1	33	FITTING, GREASE, STR. THRD, 1/8 STL, ALEMITE NO. 1669-B		WA45425
4	34	NUT, LOCK, FULL HGT, HEAVY HEX, 1/4NC, FLEXLOCK 18-8SST		WA 50152
1	35	SEAL, OIL, JOHNS-MANVILLE NO. 13868-SSW		WA47502
25	37	PADDLE, ADJUSTABLE AGITATOR		B4078-001-00
2	38	NUT, LOCK, FULL HGT, HEAVY HEX, 5/8NC, FLEXLOCK 18-8SST		WA41667

CONFIDENTIAL - PROPERTY OF			BY	NAME	DATE	ORDER NO.
SPROUT, WALDRON & Co. Inc. MUNCY, PA.			DR	CE S	5/18/79	
SECTIONAL ASSY. OF 18 x 56 DUAL DRIVE FEEDER COND. WITH ADJ. PADDLES			CHECK			SHEET _____ OF _____
			APPRO	JEB	27 MAY 79	DRAWING NUMBER D3650-221
			SCALE:			1856-0880



DETAIL A



SUPERSEDES
DWG. D3650-215

AFTER PL (15) IS MOUNTED
IN POSITION, DRILL 3/8 DIA
HOLE THRU BASE FOR ROLL
PIN.

EST. WT = 1050 LBS.
ASSY DWG. D3650-220

NO.	REV.	DATE	BY	CHKD.
1				
2				
3				
4				
5				
6				
7				
8				
9				
10				
11				
12				
13				
14				
15				
16				
17				
18				
19				
20				
21				
22				
23				
24				
25				
26				
27				
28				
29				
30				
31				
32				
33				
34				
35				
36				
37				
38				
39				
40				
41				
42				
43				
44				

UNLESS OTHERWISE NOTED		
FRACTION	DECIMAL	
MACHINED SURFACE	RA 12.5 & 17.5	
ROUNDED EDGES	ON ALL MACHINED SURFACES	
SHALL NOT BE	CHECKED	
ALL DIMENSIONS ARE IN INCHES		
COND. PROP. OF	SPROUT, WALDRON & CO. INC. HUNTSVILLE, PA.	
DESIGN NO.	D 3650-220	
DATE	10/11/52	
BY		
CHKD.		
APP'D.		
REVISIONS		
NO.	DATE	DESCRIPTION
1		
2		
3		
4		
5		
6		
7		
8		
9		
10		
11		
12		
13		
14		
15		
16		
17		
18		
19		
20		
21		
22		
23		
24		
25		
26		
27		
28		
29		
30		
31		
32		
33		
34		
35		
36		
37		
38		
39		
40		
41		
42		
43		
44		

D 3650-221
1956-0880